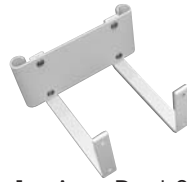


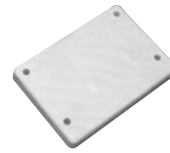
Arm Rest Shelf Installation Instructions for STATIONARY TABLES

Required Tool:

1- Allen Wrench
(included)



1 - Arm Rest Shelf
Bracket Assembly



1- Plywood
Spacer Block



4 - 1³/₄" Socket Head
Cap Screws



Fig.1

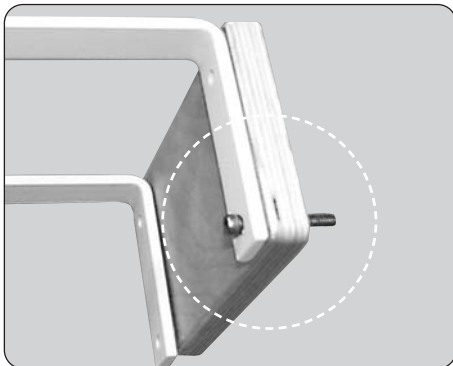


Fig.2



Fig.3



Fig.4



Fig.5

Instructions for Assembly:

1) Remove the 1" long Button Head Cap Screws from the face rest bracket, if you have one, and discard the 1" Button Head Cap Screws. (Fig.1)

2) Place the plywood spacer block on top of the Arm Rest Shelf Bracket Assembly. Insert one 1³/₄" Socket Head Cap Screw through the Bracket Assembly and through the spacer block. (Fig. 2)

3) Place the Arm Rest Shelf Bracket Assembly under the table and hand tighten the 1³/₄" Socket Head Cap screw into the threaded insert. Hand tighten the 3 remaining Socket Head Cap screws. (Fig. 3.)

4) Tighten the 1³/₄" Socket Head Cap Screws by using the Allen Wrench. (Fig.4)

5) Insert the dowel rods on the armrest into the bracket (Fig.5)

If you have any questions or comments, please give us a call at 1-800-558-8850. Our hours are M-F, 9:00 am to 5 pm EST. One of our Customer Service Reps will be glad to assist you.

OAKWORKS[®], Inc.

923 East Wellspring Rd., New Freedom, PA 17349

Toll Free Phone: 800-558-8850 Phone: 717-235-6807

FAX: 717-235-6798

www.oakworks.com



Therapeutic Equipment